

Refik Anadol & Peggy Weil

UnderLA: 1st Street Bridge
 Historic 1st Street Bridge, East 1st Street between Santa Fe Avenue & Mission Road, Downtown LA 90033
 14th Council District
 Origin of the LA River, 6883 Owensmouth Avenue, Canoga Park 91303
 3rd Council District

UnderLA uses scientific data generated from LA's aquifers—layers of porous rock capable of holding and transmitting water—to create a site-specific projection for the 1st Street Bridge (#underwater/ underwaterwater.com).



Mel Chin

The TIE that BINDS: the MIRROR of the FUTURE
 The Bowtie
 2780 West Casitas Avenue,
 Glassell Park 90039
 1st Council District

Mel Chin reimagines the 18.6 acres that make up the Bowtie—an area adjacent to the LA River, near where the 5 and 2 freeways meet—with a new landscape of native, drought-tolerant plants. Visitors can take home a newly mapped "parcel" and plant it in their yards or community gardens.



Lucky Dragons

The Spreading Ground
 Hansen Dam, 12272 Osborne St., Pacoima, 91342
 7th Council District

The Spreading Ground is a month-long series of workshops designed for public participation—with the understanding that the denizens of LA are dynamically bound together by water. These workshops culminate in a musical score derived and performed by Lucky Dragons and The Spreading Ground participants.



Teresa Margolles

La Sombra (The Shade)
 Echo Park Lake, 1698 Park Avenue, Echo Park 90026
 13th Council District

Collaborating with volunteers from all over the city, Teresa Margolles washed over 100 public spaces where lives were taken over the course of the past year in LA. Collecting the water from each site washing, Margolles used the water to erect a single memorial to these victims of violence, and offer a place of respite at Echo Park Lake, where visitors can rest, meditate, and reflect under La Sombra (The Shade).



Rirkrit Tiravanija

Untitled 2016 (LA Water, Water Pavilion)
 Sepulveda Basin, 6300 Lake Balboa Hiking Trail,
 Encino 91411
 6th Council District

An intimate, timber-frame structure houses weekly events centered on public interaction with the LA River, its users, and the surrounding urban fabric. In this project, Tiravanija employs architecture to create a juncture between people and place, creating situations that bring us closer to the river.



Edgar Arceneaux

The CENTER of the EARTH
 Cheviot Hills Recreation Center, 2657 Motor Avenue,
 West LA 90064
 5th Council District

Edgar Arceneaux appropriates minimal forms often seen in drinking fountains found in public spaces to create a different fountain of sorts. The CENTER of the EARTH draws parallels between the use of altars and water in religious and everyday contexts. As an extension, Arceneaux's work considers the below-ground transit of water and the above-ground ideologies of the people that regulate it.



Chris Kallmyer

New Weather Station
 Norman O. Houston Park, 4918 South La Brea Avenue, Baldwin Hills 90008. 8th Council District

The Los Angeles Department of Weather Modification is a performing group that collaborates with Southern California communities to address weather, water, and the evolution of the arid city. During CURRENT, the group is headquartered at New Weather Station, a 20-foot open-air geodesic dome hosting a series of events featuring LA-based artists, designers, historians, urbanists, chefs, and thinkers exploring the intersection of water and weather modification.



Lucky Dragons

Δ (Delta)
 Bee Canyon Park, 17307 Sesnon Boulevard,
 Granada Hills 91344
 12th Council District

Mimicking the unstable nature of water, Lucky Dragons creates a series of unique performances at Bee Canyon Park in which characters uncover a new set of instructions and resources each weekday afternoon to engage visitors and respond to LA's water infrastructure.



Michael Parker

The Ides
 Point Fermin Park, 739 West Paseo Del Mar, San Pedro 90731
 15th Council District

An arch frames the ocean views of the San Pedro bluff and showcases the drama of Point Fermin, a site engulfed by water, sun, and the Port of LA. Developed in collaboration with peers and through dialogue between digital and analog processes, Parker's project reflects the intersection between human engineering as seen in the Port of LA and the natural setting of Point Fermin Park.



Josh Callaghan & Daveed Kapoor Mast

South LA Wetlands Park, 5413 South Avalon Boulevard,
 South LA 90011
 9th Council District

Collaborators Josh Callaghan & Daveed Kapoor's large-scale sculpture, comprising a mast, sail, and rigging, rises out of the South LA Wetlands Park's landscape. The work addresses California's colonial history and the vestiges of its destructive legacy, while also functioning both as a cultural marker and a shade structure for park visitors.



Candice Lin

A Hard White Body
 Westside Neighborhood Park, 2999 Clyde Avenue,
 West Adams 90016
 10th Council District

Candice Lin's sculpture appropriates water filtration and microbe growth to consider how the power of small beings disrupts social hierarchies. By using bacteria found in kombucha as an active collaborator, the sculpture highlights the presence of bacteria in our environment as well as our continued vulnerability and dependence on it in order to live.



Kori Newkirk

Prime
 South Weddington Park, 10798 Bluffside Drive,
 Studio City 91604
 2nd Council District

Working with an American vernacular used in fountains and parks, Kori Newkirk presents a sculpture of horses installed in a trench. The work responds to the drought via exaggerating the concavity of fountains and addresses cultural boundaries present in parks and public places.



Gala Porras-Kim

Supplement to Ballona Discovery Park Informative Signs
 Del Rey Lagoon Park, 6840 Esplanade Street,
 Playa Del Rey 90293
 11th Council District

Gala Porras-Kim creates signage that tells the story of the Tongva burial ground located at the Del Rey Lagoon Park. The work draw attention to the beginnings of the wetlands and the controversial handling of the burial ground, giving viewers an opportunity to learn about a history that has been removed.



Kerry Tribe

Exquisite Corpse
 Sunnyside River Park
 LA River Bike Path
 Atwater Village 90039
 [parking: 3308 Riverside Drive, Los Feliz 90027]
 4th Council District

Exquisite Corpse is a 51 minute-long experimental film set along the 51 miles of the LA River. Working in various documentary styles, Kerry Tribe seeks to capture the river's landscapes, neighborhoods, creatures, and community through a string of sensorially engaging, meditative micro-narratives.

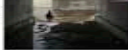


IMAGE CREDITS

Panic Studio LA,
 Courtesy of:
 City of Los Angeles Department of Cultural Affairs from its
 CURRENT:LA Water
 Public Art Biennial 2016.